

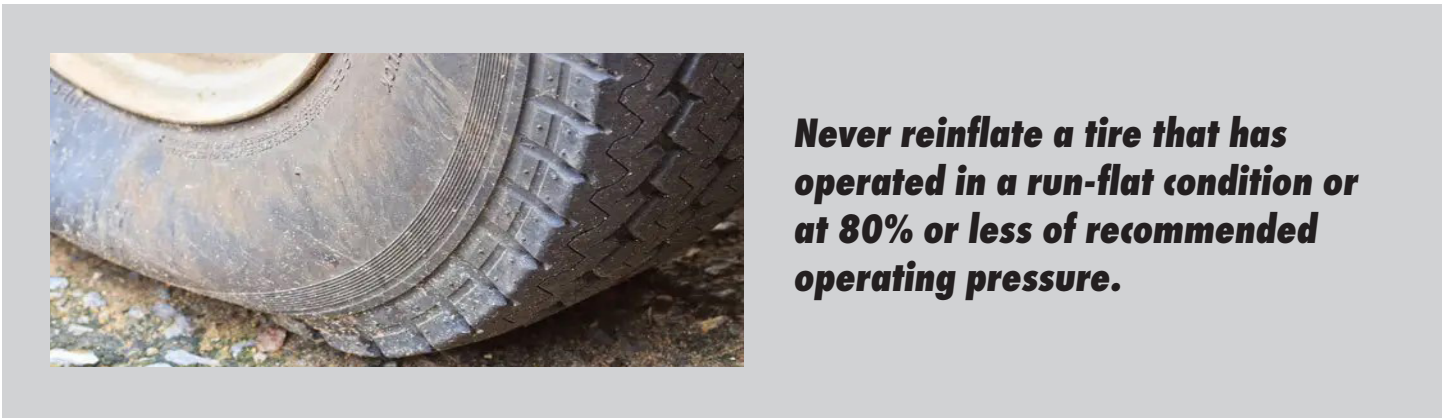
WHEEL & TIRE INSPECTIONS

Regular wheel inspection is essential when mounting simulators. Check for damage from curb impacts, road hazards, or maintenance incidents. Inspect the bead seat area of the rim, the lug nut region for wear, and look for any physical damage or significant corrosion.



IMPORTANT:

Any damaged wheel must be serviced by a professional repair facility before adding air pressure. If a tire is underinflated, have both wheel and tire professionally serviced rather than attempting to add air pressure.



Never reinflate a tire that has operated in a run-flat condition or at 80% or less of recommended operating pressure.

SIMULATOR INSPECTIONS

After the Simulators have been installed, they should be inspected regularly, verifying they are tight and secured to the wheel. Every few weeks the simulators should be removed for inspection. **NOTE:** If there is damage to the lip of the simulator, the lip of the wheel may be damaged as well. Make sure to thoroughly inspect the wheel for any damage that could have occurred to the wheel (See our Wheel & Tire Inspection Guide). If any wheel is damaged do not reinstall the simulator until the damaged wheel is repaired or replaced. Also inspect the mounting brackets, make sure all screws and nut connections are tight. Check brackets for excessive wear, hair line cracks, etc. If braided stainless steel air valves are installed, they should be inspected for fraying and excessive wear, as well as secure connections with the rim air valves.

