



# SIMULATOR, WHEEL & TIRE INSPECTION GUIDE

## WARNING! SIMULATOR & WHEEL DAMAGE

For wheels with installed wheel simulators and air valve extensions.

Before inflating the tire through the simulator air valve access hole, thoroughly inspect the wheel simulator.



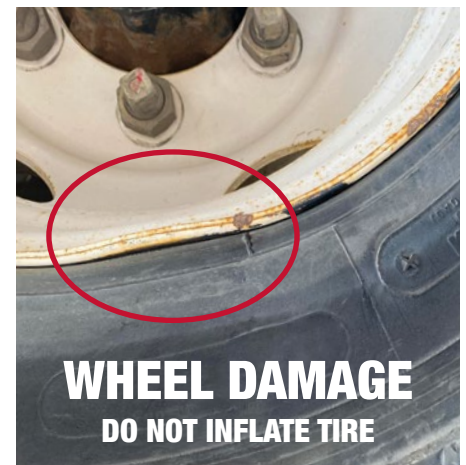
A bent edge of a simulator is a sign the wheel is damaged.

**DO NOT** inflate the tire through the simulator air valve access hole, before having the wheel inspected.



### DAMAGED SIMULATOR & WHEEL

If there is damage to the edge of the simulator, **DO NOT** attempt to fill the tire through the air valve. Immediately remove the simulator and inspect the wheel for damage.



## WARNING!

Adding air pressure to a damaged wheel or a tire that is at **80% or less** of the recommended operating pressure is extremely dangerous.



**DAMAGED WHEELS MUST BE SERVICED BY A PROFESSIONAL TIRE FACILITY**

# WARNING! SIMULATORS & LOW TIRE PRESSURE

For wheels with installed wheel simulators and air valve extensions.

**DO NOT** inflate the tire through the simulator air valve access hole if the tire has operated in a run-flat condition or is at 80% or less of recommended operating pressure.



## EXAMPLE

The tire's recommended air pressure is 100 psi. After checking the tire pressure with a tire gauge, it's at 80 psi. That means it's at 80% or less of the recommended operating pressure, which is too low to safely add air pressure.

**DO NOT** attempt to add air to that tire. Remove the simulator and have both the wheel and tire professionally serviced.

**NEVER REINFLATE A TIRE THAT HAS OPERATED IN A RUN-FLAT CONDITION OR AT 80% OR LESS OF THE RECOMMENDED OPERATING PRESSURE.**

## REGULAR INSPECTION

Simulators should be inspected regularly, verifying they are tight and secured to the wheel. Every few weeks the simulators should be removed for inspection. Also inspect the mounting brackets, to make sure all screws and nut connections are tight. Check for any damage to the wheel, simulator and hardware as well.



Made in America,  
by Americans, for the  
Worldwide Road!

Call **1-847-662-7722**  
for more information.

3905 Route 173 • Zion, IL 60099  
[www.RealWheels.com](http://www.RealWheels.com)

