



REAR COVER-UP HUB COVERS WITH TURN & LOCK BRACKET FOR 6-LUG BALL SEAT WHEELS

INSPECTION & RECOMMENDED CLEANING

- Inspect all parts for shipping damage before installation. If any of the parts appear damaged or questionable, DO NOT INSTALL! Contact your dealer or our facility for a replacement part or assistance. **Once a product is installed, it cannot be returned because of shipping damage.**
- Before installing covers we recommend cleaning the wheels so the mounting bracket attaches to a clean surface.
- Read and understand all installation instructions prior to installation. If any part of the instruction seems unclear, contact our office for technical assistance during business hours Monday through Friday 8am to 4:30pm CST at 800-982-1180 or 847-662-7722.

AFTER COVERS HAVE BEEN INSTALLED

- After the Covers have been installed they should be inspected regularly, verifying they are tight and secured to the wheel. Every few weeks the Covers should be removed, thoroughly cleaned; and an inspection of the wheels, Covers and mounting brackets should be preformed. Make sure all screws and nut connections are tight. Check brackets for excessive wear, hair line cracks, etc.

CARE & REQUIRED MAINTENANCE

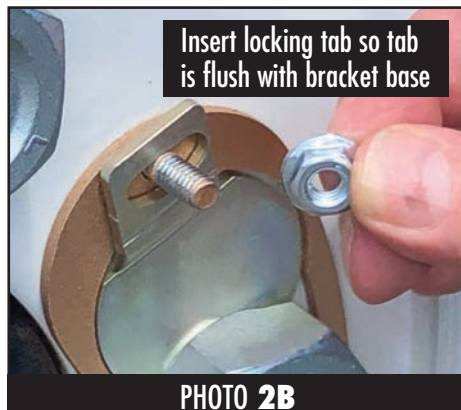
- Use of harsh chemicals and strong acid based soaps should never be used. On a regular basis we recommend the Covers be washed with mild automotive car or truck wash soap and water.



Step 1. Installing Brackets

**Note:** Do not remove lug nuts. Larger openings of bracket base will clear lug nuts. Begin by placing the larger openings of bracket base over the lug nuts. (See Photos 1A & 1B) Then rotate the bracket counter-clockwise until the smaller openings of the bracket base lock under the tapered area of the lug nuts. (See Photo 1C)

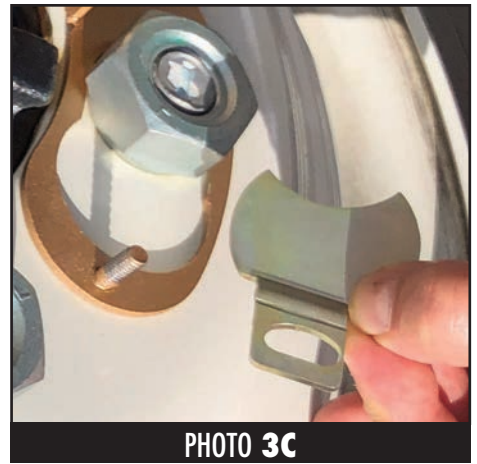
**Note:** You may need to use a rubber mallet to tap bracket until the smaller openings of the bracket base lock under the tapered area of the lug nuts. (See Photo 1D)



Step 2. Installing Bracket Locking Tabs

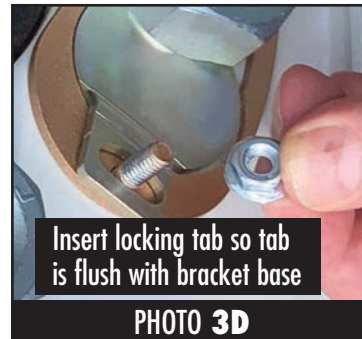
Insert one of the bracket locking tabs into the cavity of the bracket base with the threaded stud. (See Photo 2A) **Note:** Insert locking tab so tab is flush with bracket base. Thread nut onto the threaded stud and tighten using a 7/16" socket or wrench. (See Photos 2B & 2C)

Continued on next page



### Step 3. Install 2nd Bracket & Bracket Locking Tab

Repeat this process for the second bracket directly across from the first bracket. Begin by placing the larger openings of bracket base over the lug nuts. (See Photo 3A) Then rotate the bracket counter-clockwise until the smaller openings of the bracket base lock under the tapered area of the lug nuts. (See Photo 3B) Insert one of the bracket locking tabs into the cavity of the bracket base with the threaded stud. **Note:** Insert locking tab so tab is flush with bracket base. Thread nut onto the threaded stud and tighten using a 7/16" socket or wrench. (See Photos 3C, 3D & 3E)



**Note for 16" Installation Only:** To protect the rim on 16" wheels, you'll need to slide on three rubber Channel Protectors evenly spaced on the bottom edge of each Hub Cover. The provided Channel Protectors **must** rest between the hand holes of the wheel rim. (See Photo 4C) Test fit the Hub Cover aligning holes in Cover with holes in the brackets to determine correct position of the Channel Protectors so they will rest between the hand holes.

### STEP 4. Installing the Cover onto the Brackets

Align holes in Cover with the holes in the brackets. Make sure the Cover is held up and evenly spaced around. (See Photo 4A) **Note:** At this point there will be 1/8" minimum gap between the back of the Cover and the top of the bracket top plate. This is designed so that the Cover draws down to the bracket when tightened.

Thread bolts (provided) through Cover and into bracket holes. (See Photo 4B) Then use a phillips head screwdriver to securely tighten the bolts. (See Photo 4C) Repeat the same process on the other wheel and you're finished. (See Photo 4D)



RealWheels Corporation • 3940 Tannahill Drive • Gurnee, IL 60031

847-662-7722 • Fax 847-662-7744 • www.realwheels.com • info@realwheels.com • toll-free 1-800-982-1180