



REALWHEELS CORPORATION

INSTALLATION QUESTIONS? CALL 1-800-982-1180

VERY IMPORTANT! Read And Understand These Steps Before Installation.

INSTALLATION OF REALWHEELS® SIMULATORS ON FORD TRANSIT WITH DUAL REAR WHEELS

INSPECTION & RECOMMENDED CLEANING

- Inspect all parts for shipping damage before installation. If any of the parts appear damaged or questionable, DO NOT INSTALL! Contact your dealer or our facility for a replacement part or assistance. **Once a product is installed, it cannot be returned because of shipping damage.**
- Before installing Simulators we recommend cleaning the wheels so the mounting bracket attaches to a clean surface.
- Read and understand all installation instructions prior to installation. If any part of the instruction seems unclear, contact our office for technical assistance during business hours Monday through Friday 8am to 4:30pm CST at 800-982-1180 or 847-662-7722.

AFTER SIMULATORS HAVE BEEN INSTALLED

- After the Simulators have been installed they should be inspected regularly, verifying they are tight and secured to the wheel. Every few weeks the Simulators should be removed, thoroughly cleaned; and an inspection of the wheels, Simulators and mounting brackets should be performed. Make sure all screws and nut connections are tight. Check brackets for excessive wear, hair line cracks, etc. If braided stainless steel air valves are installed they should be inspected for fraying and excessive wear as well as secure connections with the rim air valves.

CARE & REQUIRED MAINTENANCE

- Use of harsh chemicals and strong acid based soaps should never be used. On a regular bases we recommend the Simulators be washed with mild automotive car or truck wash soap and water.

INSTALLATION OF REALWHEELS® FRONT SIMULATORS



PHOTO 1 — FRONT

With a flat head screwdriver, carefully remove factory plastic cap.



PHOTO 2 — FRONT

Using the larger holes of the mounting plate, loosely place the mounting plate over the wheel lug nuts.

Note: Do not remove any lug nuts.

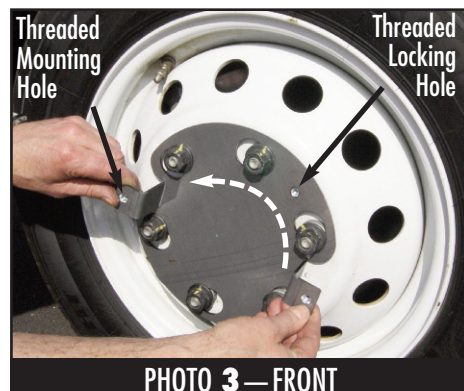


PHOTO 3 — FRONT

Once the mounting plates larger hole areas are all under the lug nut flanges, rotate the mounting plate counter-clockwise so the smaller slotted areas of the mounting plate engage under and around the lug nut flanges.



PHOTO 4 — FRONT

Installing the Anti-Rotation Lock

Position the anti-rotation lock between two lug nuts and over the threaded hole in the mounting plate.

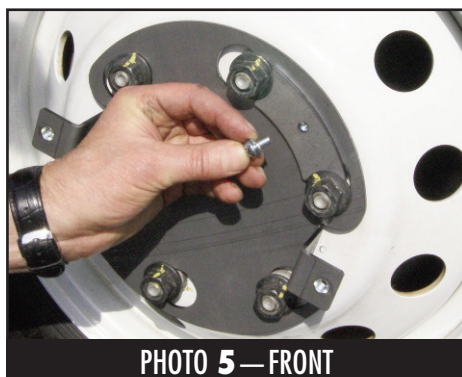


PHOTO 5 — FRONT

Hand thread the 1/4" bolt with split lock washer through the hole in the anti-rotation lock and into the threaded hole in the mounting plate. Securely tighten with a phillips head screwdriver. (See photos 5, 6A and 6B.)

Note: Once the anti-rotation lock is tightened to the mounting plate and the mounting plate cannot rotated, it is normal if the mounting plate feels slightly loose and may rattle against the lug nut flanges. Once the wheel cover is installed, the wheel cover and mounting plate will be tight and not loose.

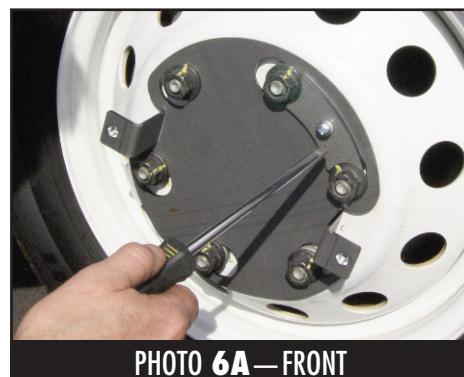


PHOTO 6A — FRONT

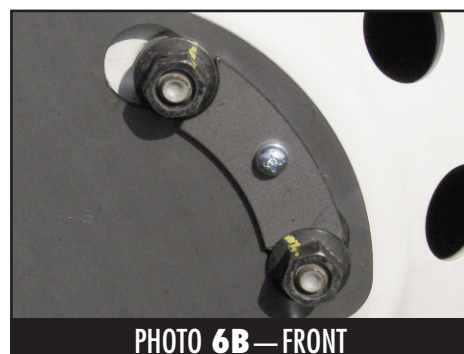


PHOTO 6B — FRONT

Continued on next page



PHOTO 7 — FRONT

Hold wheel cover up to wheel and mounting plate so the wheel cover seats evenly on the rim edge.



PHOTO 8 — FRONT

Hand thread the two 5/16" phillips head mounting bolts with split lock washers through the holes in the cover and into the threaded mounting holes of the mounting plate.



PHOTO 9 — FRONT

Continue holding the wheel cover evenly on rim edge. Using a phillips head screwdriver, securely tighten the screws while ensuring that the wheel cover tightens up true on the wheel.



PHOTO 10 — FRONT

Repeat for other front wheel and you are finished.

INSTALLATION OF REALWHEELS® REAR SIMULATORS



PHOTO 1 — REAR

With a flat head screwdriver, carefully remove factory plastic cap.



PHOTO 2 — REAR

Place one of the brackets onto the top of two studs. **Note:** Do not remove any lug nuts. Brackets install on top of wheel lugs using excess stud.



PHOTO 3 — REAR

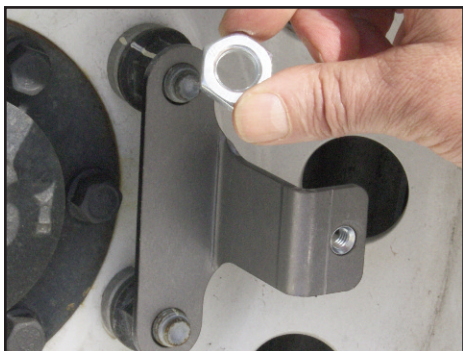


PHOTO 4 — REAR



PHOTO 5 — REAR

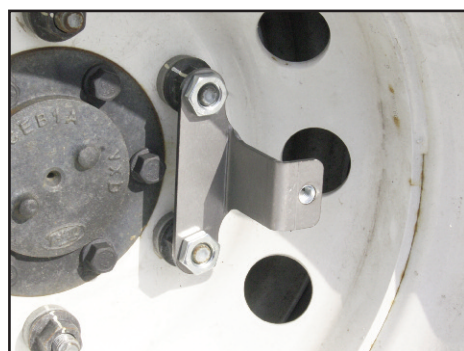


PHOTO 6 — REAR

Secure the bracket by threading two jam nuts onto the excess stud. Securely tighten the jam nuts with 7/8" socket and ratchet.



PHOTO 7 — REAR

Position the second bracket directly across from first bracket (See Photo 7) and secure as with the first bracket.



PHOTO 8 — REAR

Hold wheel cover up to wheel and mounting plate so the wheel cover seats evenly on the rim edge.

Continued on back page



PHOTO 9 — REAR

Hand thread the two 5/16" phillips head mounting bolts with split lock washers through the holes in the cover and into the threaded mounting holes of the mounting plate.



PHOTO 10 — REAR

Continue holding the wheel cover evenly on rim edge. Using a phillips head screwdriver, securely tighten the screws while ensuring that the wheel cover tightens up true on the wheel.



PHOTO 11 — REAR

Repeat for other rear wheel and you are finished.

RealWheels Corporation • 3940 Tannahill Drive • Gurnee, IL 60031
847-662-7722 • Fax 847-662-7744 • www.realwheels.com • info@realwheels.com • toll-free 1-800-982-1180