



**INSTALLATION OF FRONT COVER-UP HUB COVERS WITH TURN & LOCK BRACKET
ON FORD AND RAM TRUCKS WITH 19.5 WHEELS**



PHOTO 1A



PHOTO 1B



PHOTO 1C



PHOTO 1D



PHOTO 1E

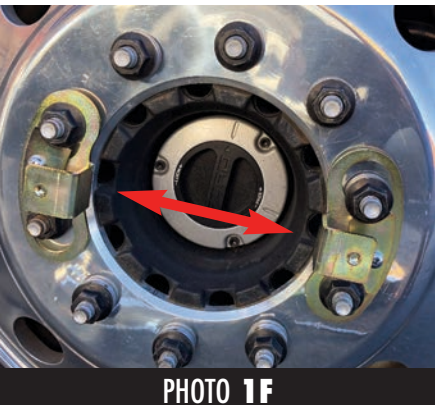


PHOTO 1F



PHOTO 2A

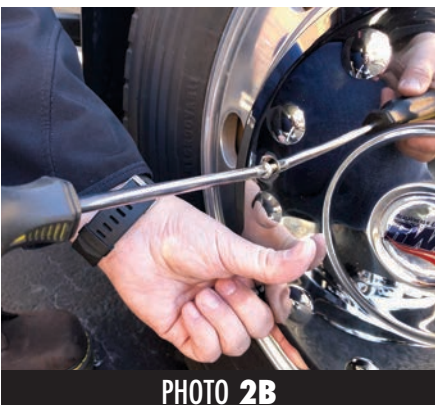


PHOTO 2B



PHOTO 2C

VERY IMPORTANT!

**Read And Understand These
Steps Before Installation.**

STEP 1 Installing Mounting Brackets

- Do not remove lug nuts. Larger openings of bracket base will clear lug nuts.
- Begin by placing the larger openings of bracket base over the lug nuts. (See Photo 1A) Then rotate the bracket counter-clockwise until the smaller openings of the bracket base lock under the tapered area of the lug nut. (See Photo 1B)
- Place the bracket locking plate onto the bracket base, aligning the hole of locking plate with the threaded hole of the bracket base. (See Photo 1C) Thread in bolt and tighten using a phillips screwdriver. (See Photos 1D & 1E)
- Repeat this process for the other bracket directly on the opposite side. (See Photos 1F)

STEP 2 Installing Cover

- Align holes in cover with holes in the bracket. (See Photo 2A)
- Then using provided S.S. screws, insert through the Hub Cover and into the holes of the mounting brackets and tighten with a Phillips screw driver. (See Photo 2B)
- Repeat the same process on the other wheel and you're finished. (See Photo 2C)

REAR MOUNTING ON BACK.

INSTALLATION OF REAR COVER-UP HUB COVERS WITH TURN & LOCK BRACKET ON FORD AND RAM TRUCKS WITH 19.5 WHEELS

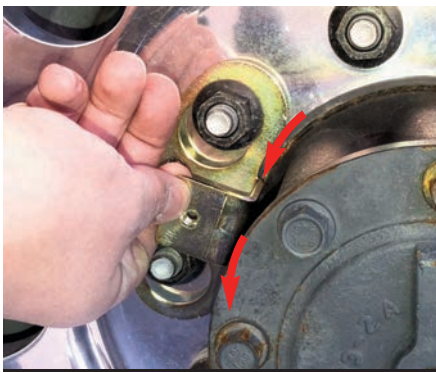


PHOTO 1A

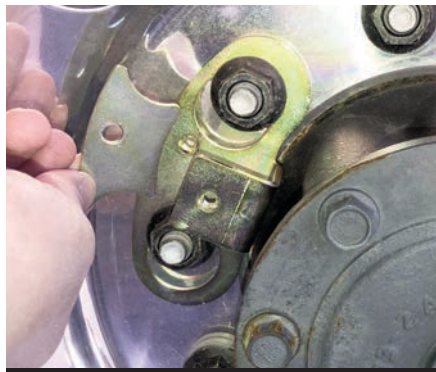


PHOTO 1B

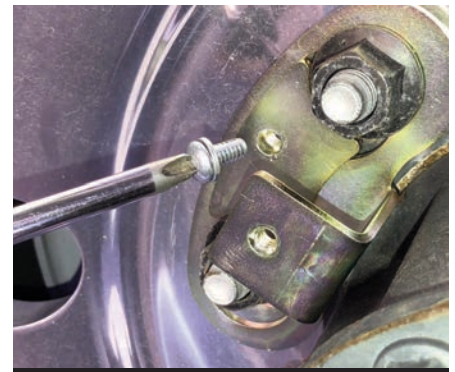


PHOTO 1C

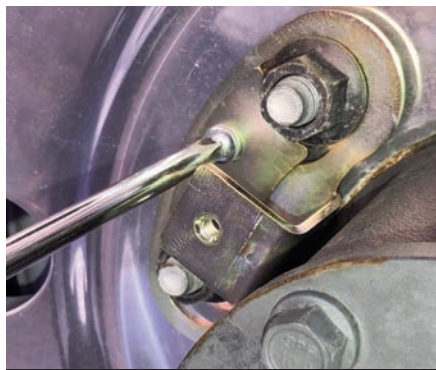


PHOTO 1D

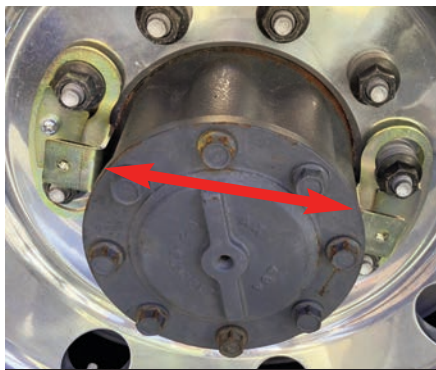


PHOTO 1E



PHOTO 2A

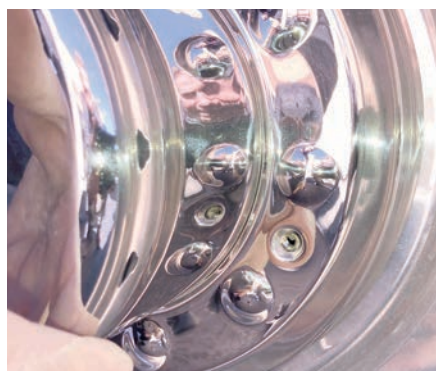


PHOTO 2B



PHOTO 2C



PHOTO 2D

VERY IMPORTANT! Read And Understand These Steps Before Installation.

STEP 1 Installing Mounting Brackets

- Do not remove lug nuts. Larger openings of bracket base will clear lug nuts.
- Begin by placing the larger openings of bracket base over the lug nuts. Then rotate the bracket counter-clockwise until the smaller openings of the bracket base lock under the tapered area of the lug nut. (See Photo 1A)
- Place the bracket locking plate onto the bracket base, aligning the hole of locking plate with the threaded hole of the bracket base. (See Photo 1B) Thread in bolt and tighten using a phillips screwdriver. (See Photos 1C & 1D)
- Repeat this process for the other bracket directly on the opposite side. (See Photos 1E)

STEP 2 Installing Cover

- Align holes in cover with holes in the bracket. (See Photos 2A & 2B)
- Then using provided S.S. screws, insert through the Hub Cover and into the holes of the mounting brackets and tighten with a Phillips screw driver. (See Photo 2C)
- Repeat the same process on the other wheel and you're finished. (See Photo 2D)

RealWheels Corporation • 3940 Tannahill Drive • Gurnee, IL 60031

847-662-7722 • Fax 847-662-7744 • www.realwheels.com • info@realwheels.com • toll-free 1-800-982-1180