

## GROOVED CUSTOM BILLET ALUMINUM REAR PULL HANDLE FOR THE HUMMER H2

**IMPORTANT: Read And Understand All Instructions Before Installation • QUESTIONS? CALL 1-800-982-1180**

**Tools Needed:** 7mm and 10mm socket, screwdriver and pliers.

**Time to install:** Approx. 35-45 Minutes



**STEP 1**

**STEP 1.** Open rear hatch door.



**STEP 2**

**STEP 2.** With a 7mm socket remove the pull strap screw.



**STEP 3**

**STEP 3.** With a 10mm socket remove the two cargo hooks.



**STEP 4A**

**STEP 4.** One at a time pull and un-clip the two push in clips located at the bottom of the door hatch.

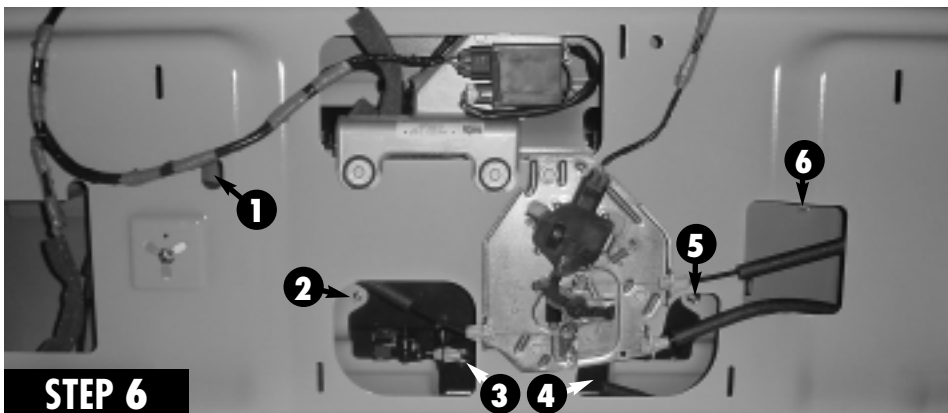


**STEP 5A**

**STEP 5.** Grabbing the top and side of the plastic rear hatch panel and pull to release the spring clips. **Note:** These clips may be tight, however steady pulling pressure will release these clips.

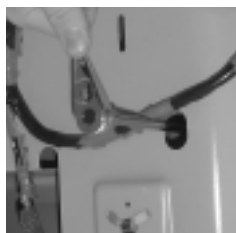


**STEP 5B**



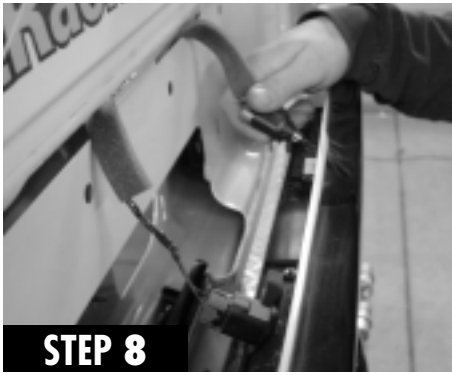
**STEP 6**

**STEP 6.** Remove the six 10mm nuts that are holding the plastic license plate panel. (See numbers in photos for position of nuts.)



**STEP 7**

**STEP 7.** Now that the six screws have been removed, on the outside pull on the side and top of the plastic license plate panel to dislodge it.



**STEP 8**

**STEP 8.** Remove the two license plate light plugs.

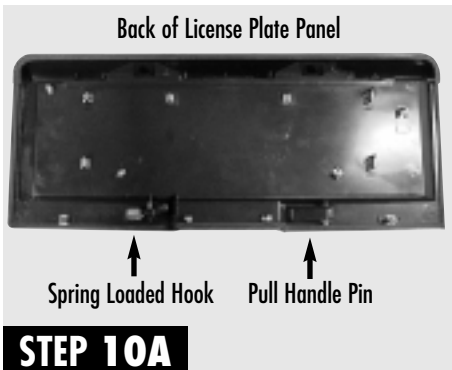


**STEP 9A**

**STEP 9.** Squeeze and push to remove the plastic cable clip from the license plate panel.

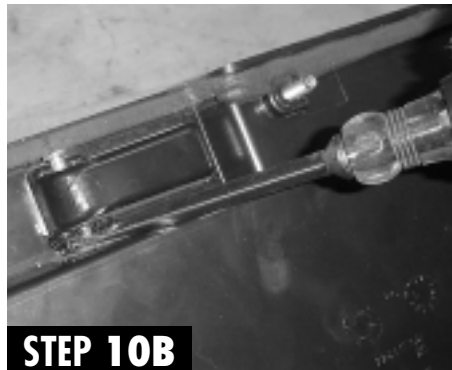


**STEP 9B**



**STEP 10A**

**STEP 10.** Place the license plate panel face down on a flat non-scratch surface. Remove pull handle pin using a screwdriver to begin wedging the pin out, then with pliers continue to pull the pin out.



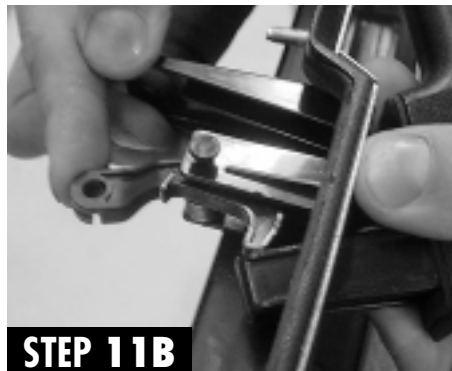
**STEP 10B**



**STEP 10C**



**STEP 11A**



**STEP 11B**



**STEP 11C**

**STEP 11.** Then on the other end of the handle remove the plastic spring loaded hook, by pushing in on the hook to release the pull handle.



**STEP 12A**



**STEP 12B**

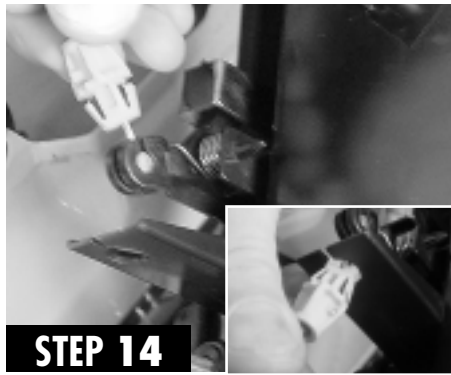


**STEP 12C**

**STEP 12.** Now take the new billet handle and repeat Step 11 in reverse.



**STEP 13.** Push the handle pin back into place, this is what it will look like.



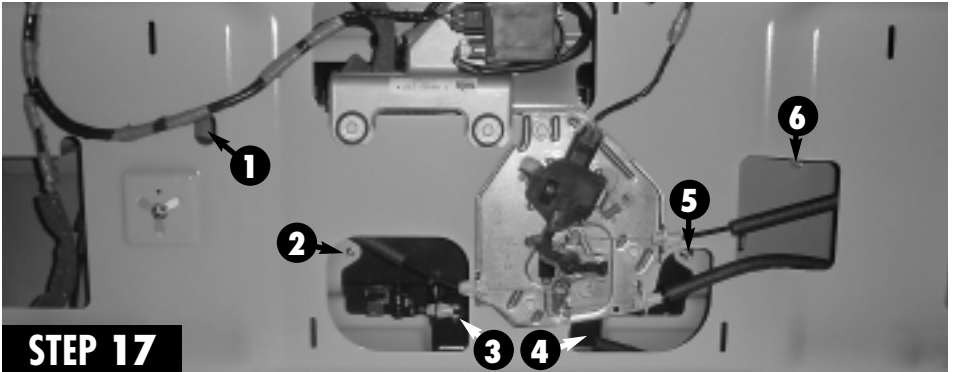
**STEP 14.** Replace plastic cable clip.



**STEP 15.** Plug the two license plate light plugs back into place.



**STEP 16.** Push license plate panel back into place making sure the spring clips engage.



**STEP 17.** Replace and tighten the six 10mm nuts



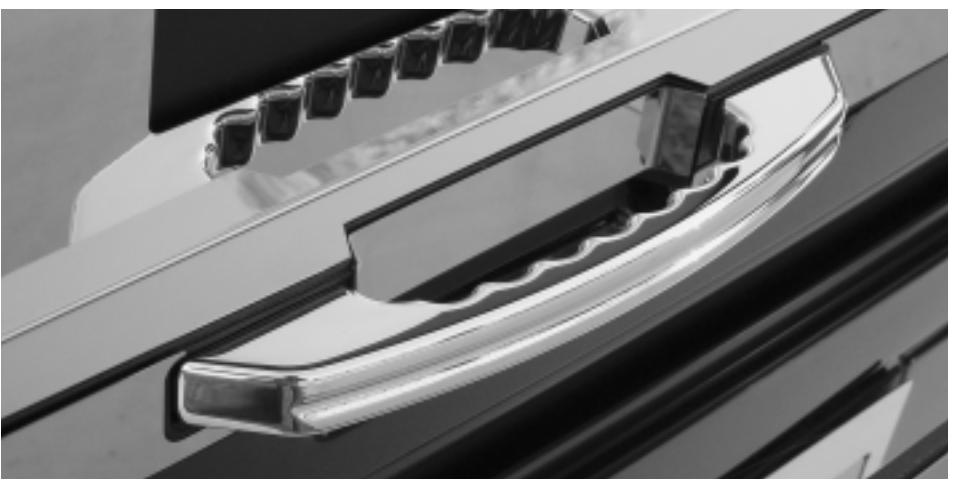
**STEP 18.** Starting at the top of the interior hatch panel, push and engage all the spring clips from top to bottom.



**STEP 19.** Replace the screws and tighten the two cargo hooks.



**STEP 18.** Replace and tighten the pull strap. Close door hatch and your finished.





**REALWHEELS COVER COMPANY, INC.**

3940 Tannahill Drive • Gurnee, IL 60031

847-662-7722 • Fax 847-662-7744 • [www.realwheelsacc.com](http://www.realwheelsacc.com)

[info@realwheelsacc.com](mailto:info@realwheelsacc.com) • **toll-free 1-800-982-1180**

---

Hummer and H2 are registered trademarks of General Motors Corporation and are used for identification purposes only.  
RealWheels Cover Company, Inc. and its products are not affiliated with General Motors Corporation products.